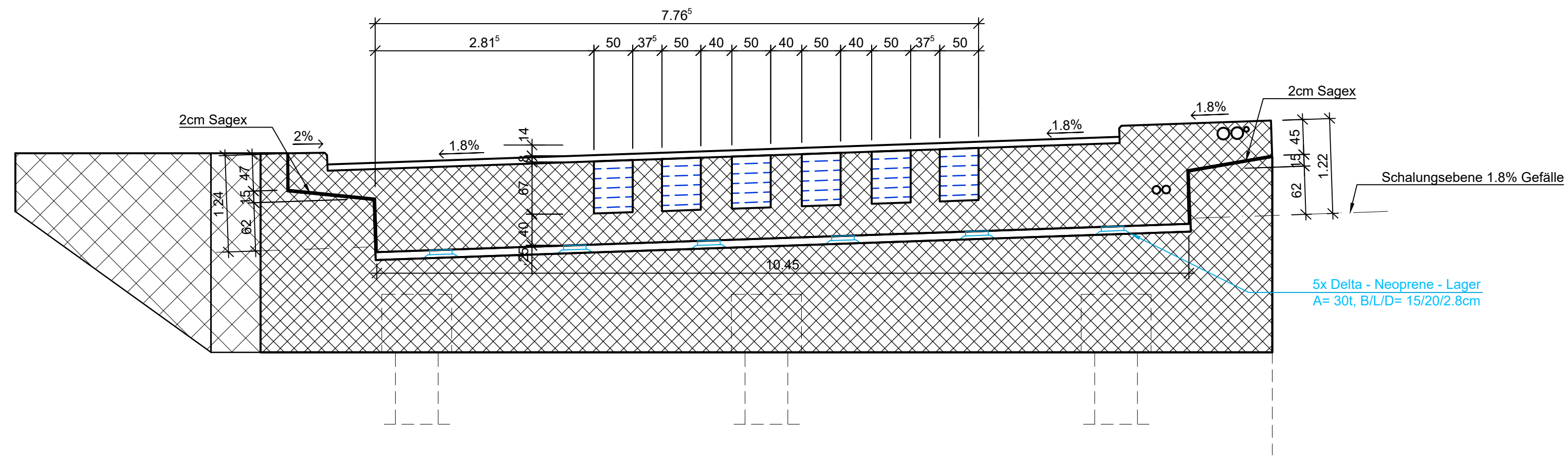
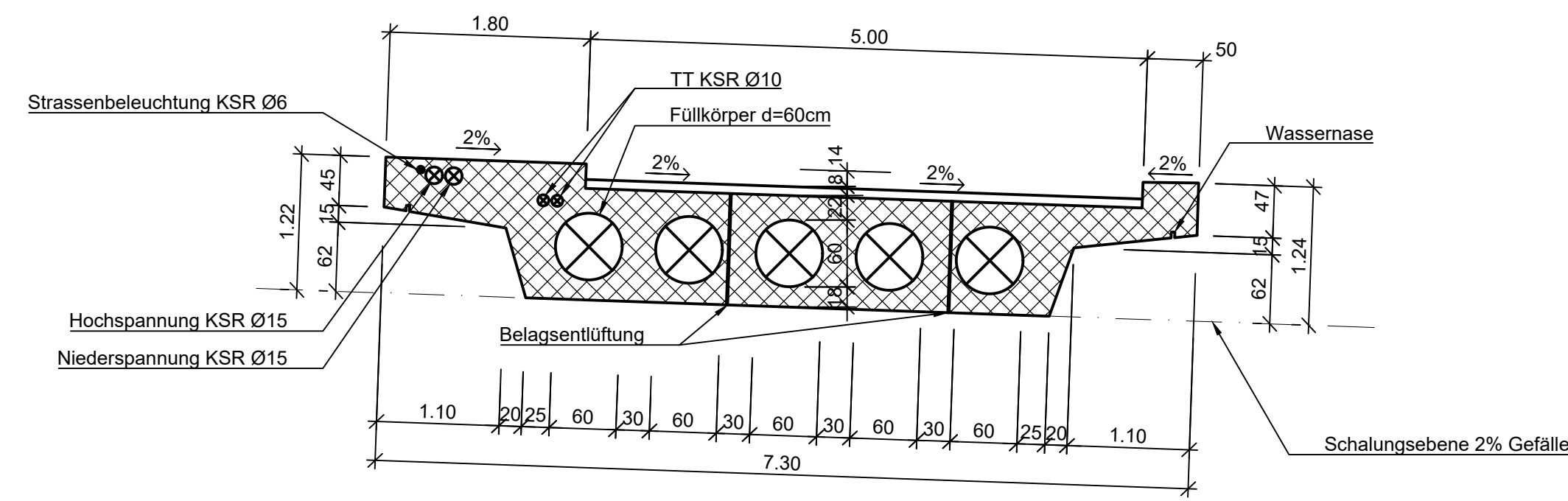


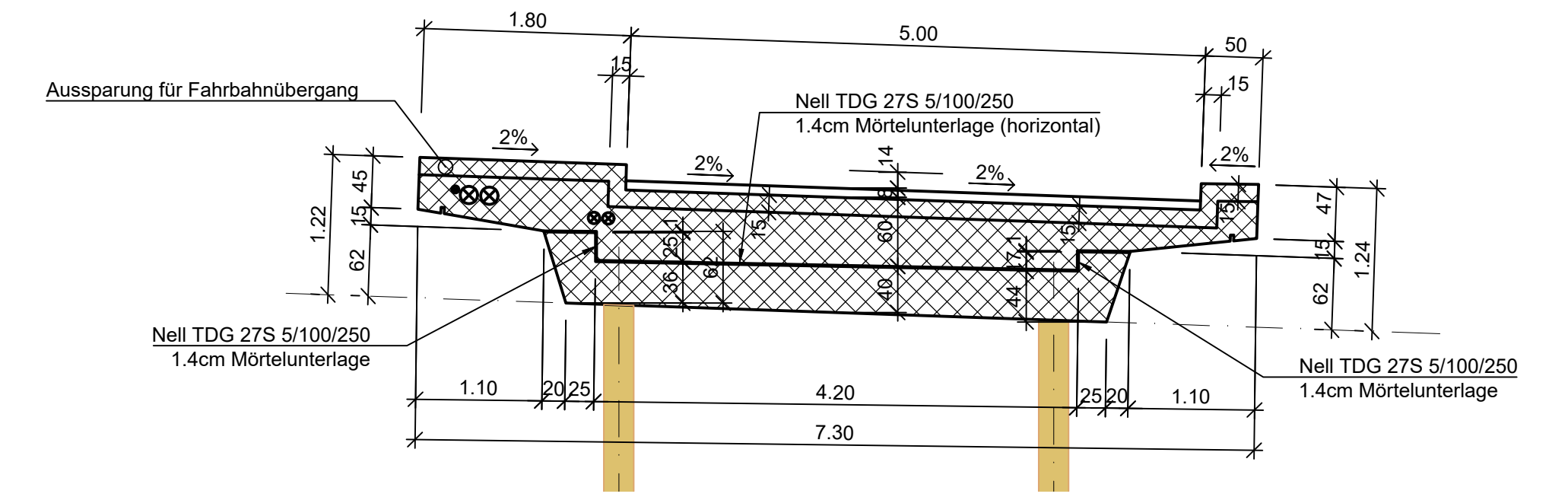
Schnitt A-A 1:50



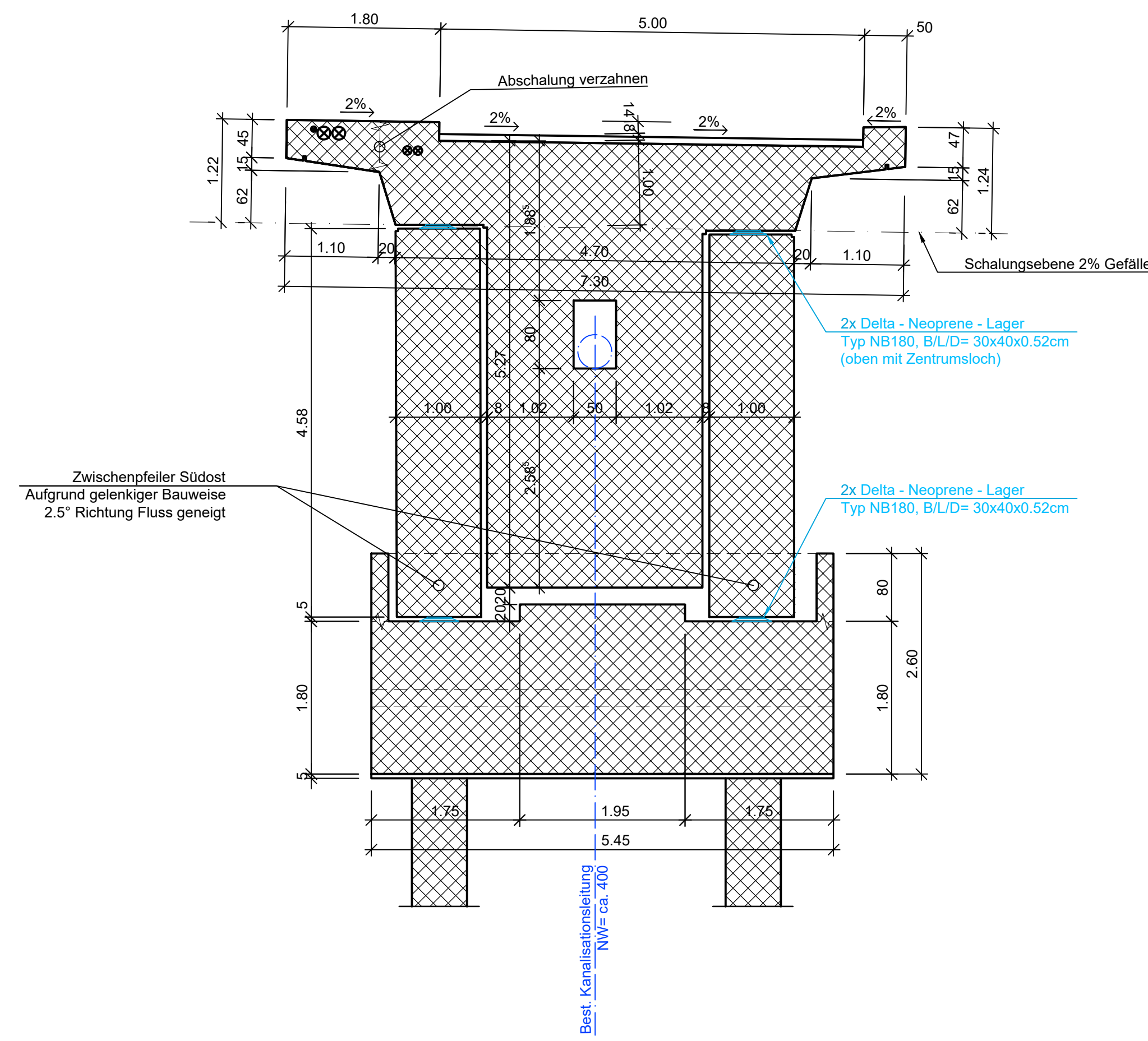
Schnitt D-D 1:50



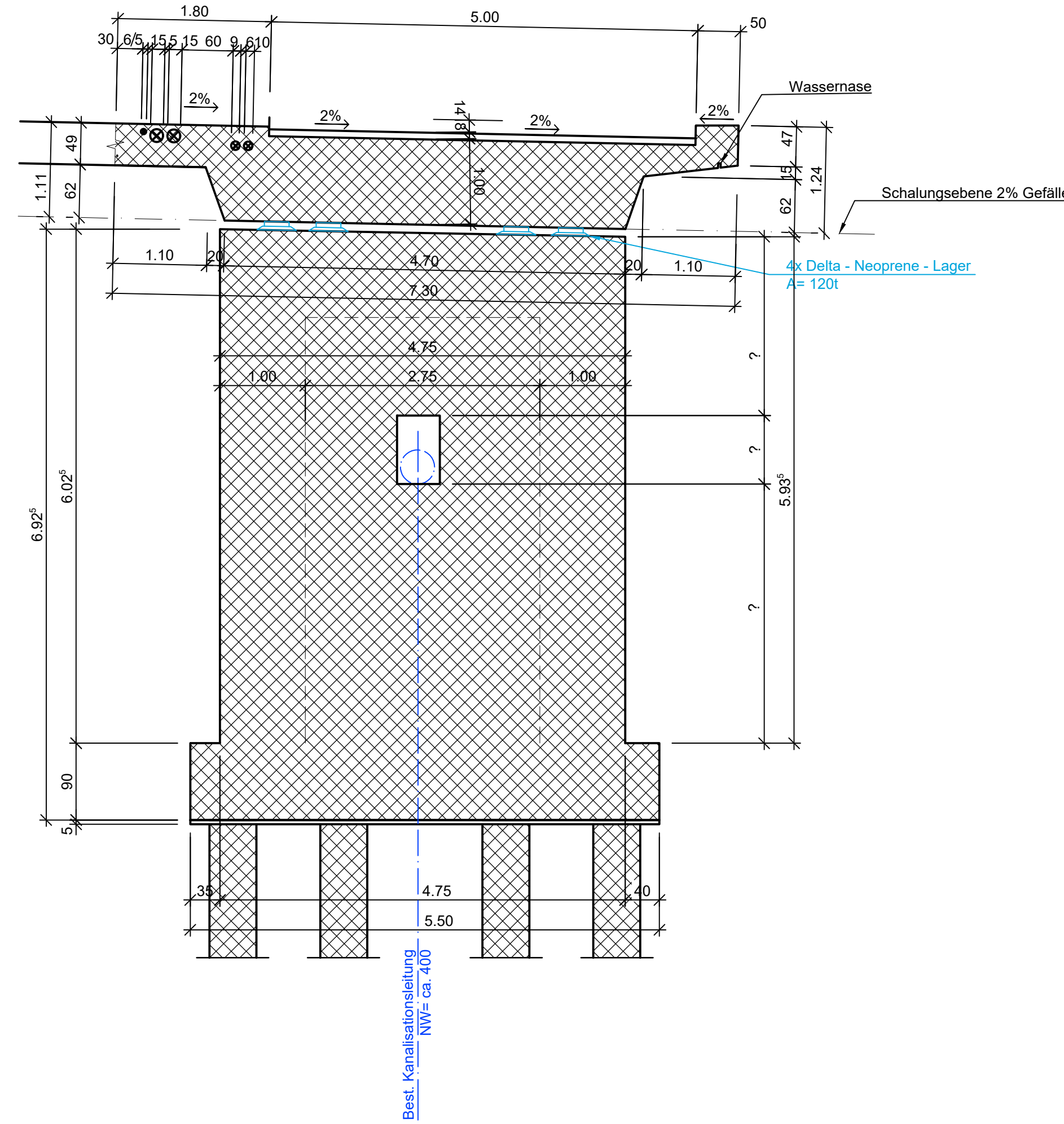
Schnitt F-F 1:50



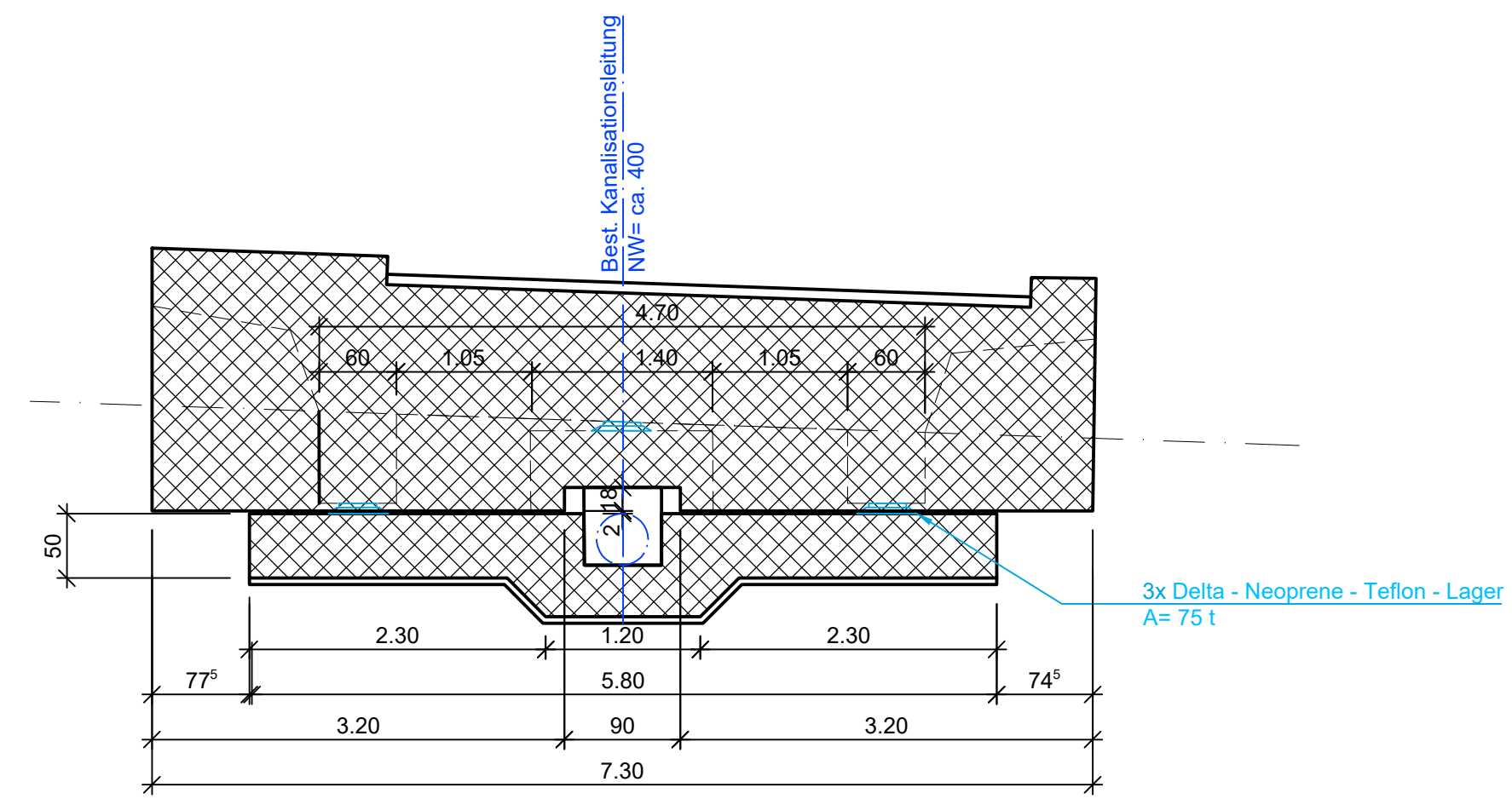
Schnitt B-B 1:50



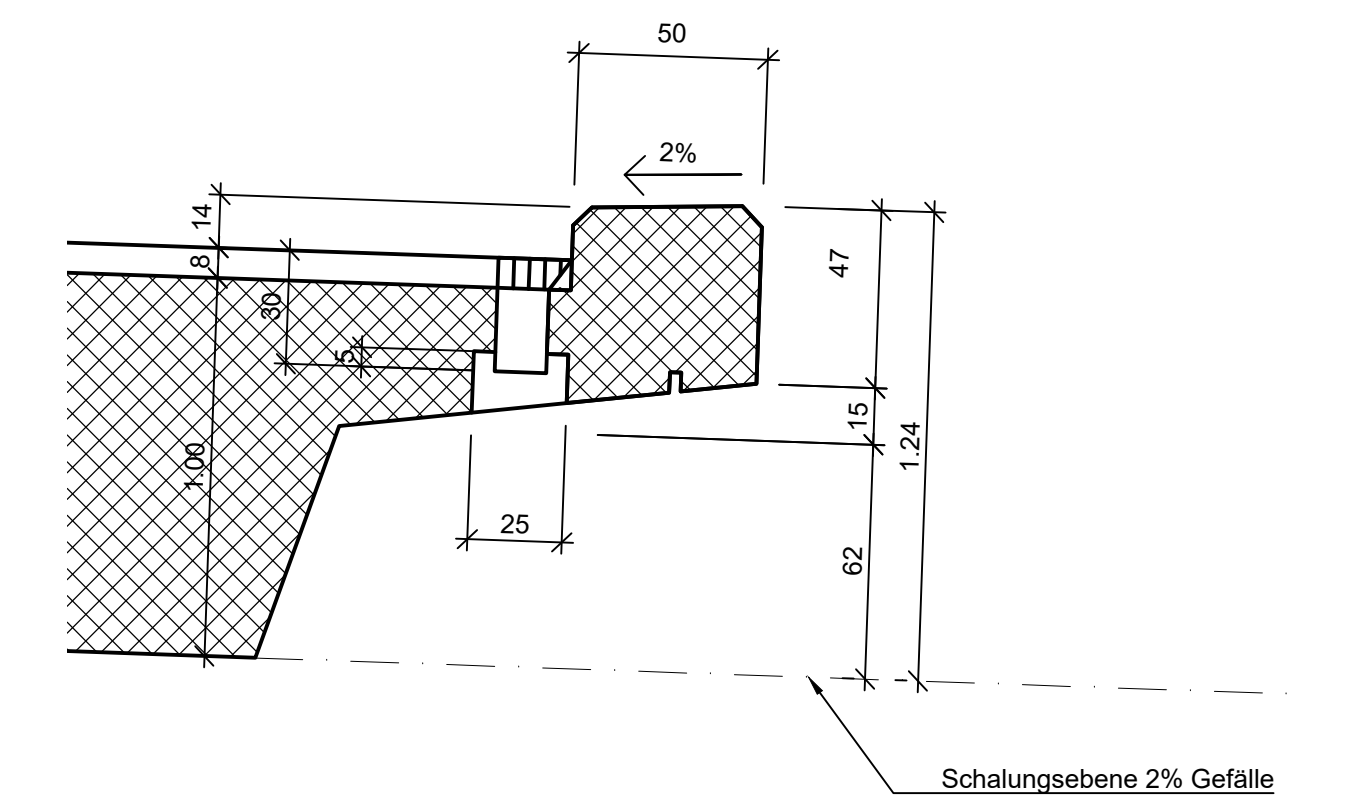
Schnitt E-E 1:50



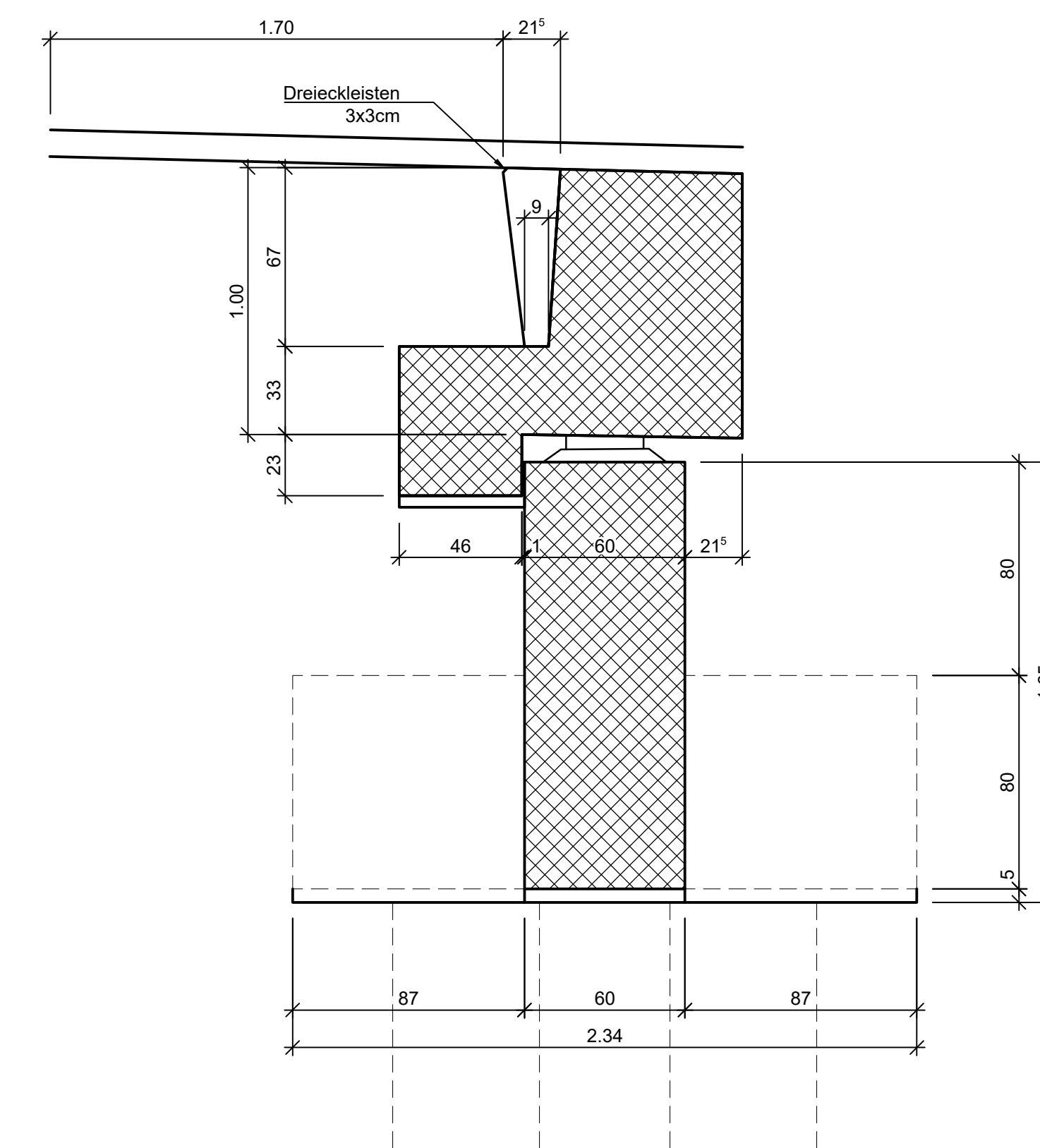
Schnitt G-G 1:50



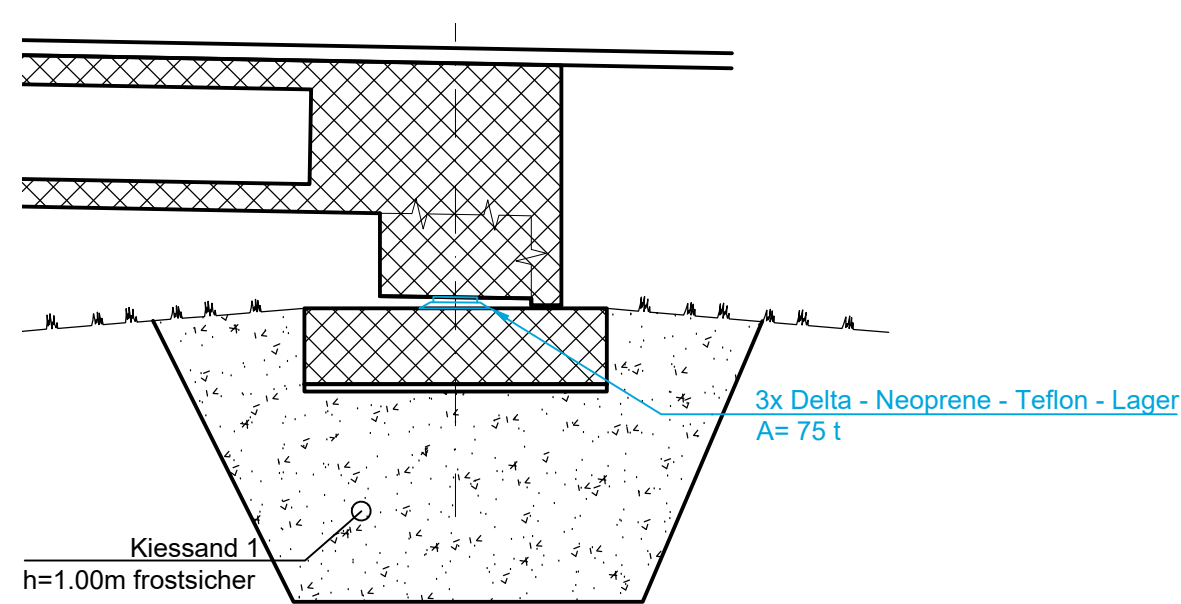
Schnitt C-C 1:20



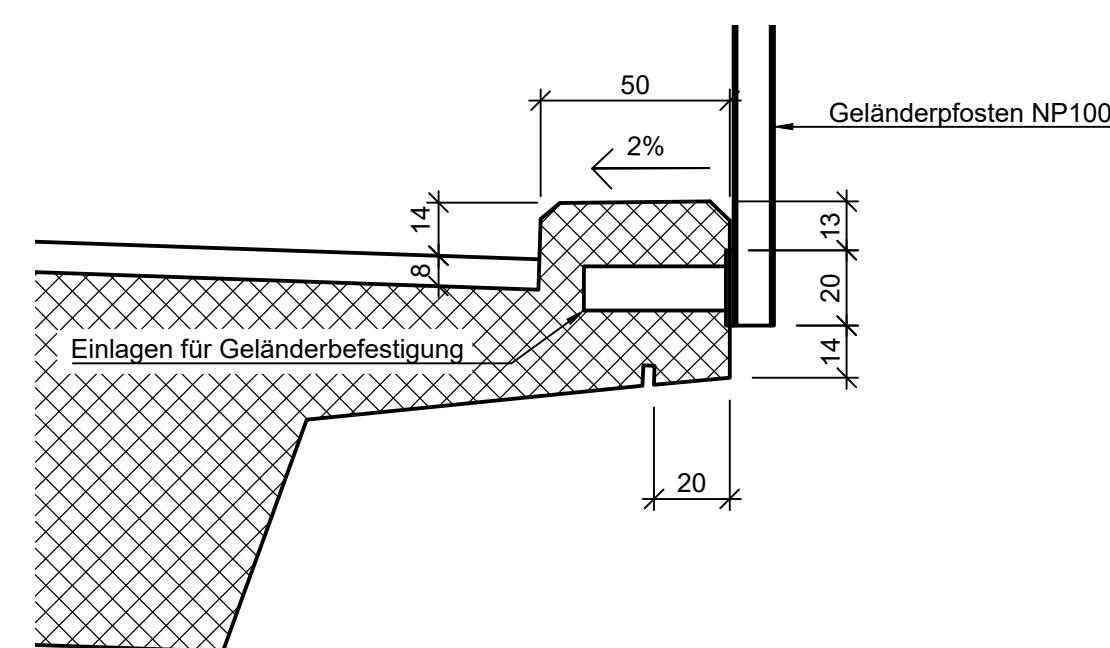
Schnitt H-H 1:20



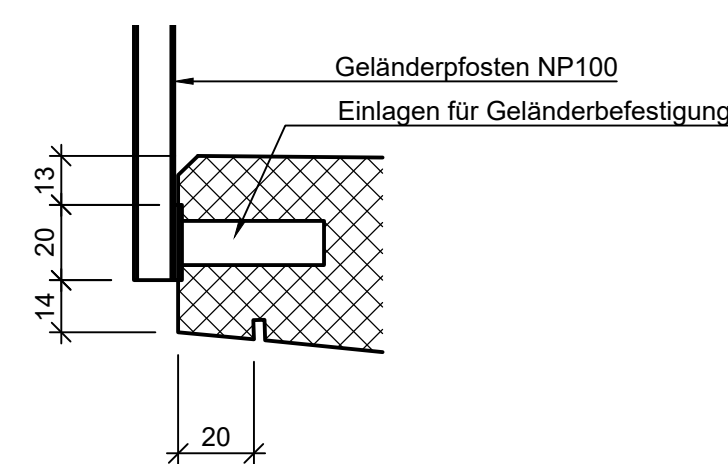
Schnitt K-K 1:20



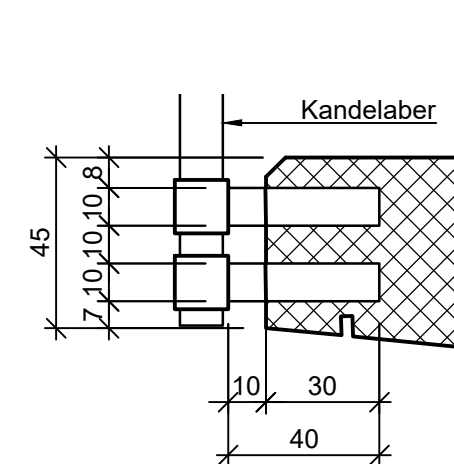
Schnitt J-J 1:20



Schnitt L-L 1:20



Schnitt M-M 1:20



BESTAND

Rev.	Datum	Änderung	Gezeichnet	Geprüft

Instandsetzung Margelibrücke
3715 Adelboden

Bestehende Brückenplatte und Fundation
Querschnitte 1:50/20

GEZ	DATUM	VIS.	MST.	1:100	PLAN NR.
SH	10.11.2021				1855 - 03
A					
B					
C					